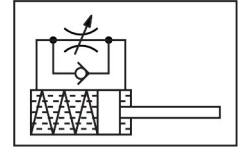


Shock absorber YSRW-20-34

Part number: 191198

FESTO



 General operating condition

Data sheet

Feature	Value
Size	20
Stroke	34 mm
Cushioning	Self-adjusting Soft characteristic curve
Mounting position	optional
Position detection	Without
Symbol	00991495
Max. impact speed	3 m/s
Reset time at room temperature	0.3 s
Reset time at min. ambient temperature	1 s
Mode of operation	Pushing Single-acting
Corrosion resistance class CRC	2 - Moderate corrosion stress
LABS (PWIS) conformity	VDMA24364-B2-L
Ambient temperature	-10 °C ... 80 °C
Cushioning length	34 mm
Max. stop force	3000 N
Max. energy consumption per stroke	70 J
Max. energy consumption per hour	100000 J
Max. residual energy	0.32 J
Reset force	10 N
Min. insertion force	100 N
Product weight	330 g
Load range	80 kg
Type of mounting	Via lock nut
Note on materials	RoHS-compliant
Material seals	NBR
Material housing	Galvanised steel
Material piston rod	High-alloy steel