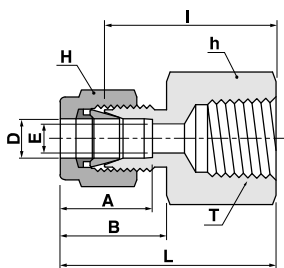


Female Connector

SCF



Connects metric tube to male ISO taper thread

Part No.	Tube O.D	T	E	Width across flat		A	B	I	L
	D	R(PT)	Min.	h	H				
SCF-3M-2R	3	1/8	2.4	14	12	12.9	15.3	22.1	28.7
SCF-3M-4R	3	1/4	2.4	19	12	12.9	15.3	26.9	33.5
SCF-4M-2R	4	1/8	2.4	14	12	13.7	16.1	23.1	29.7
SCF-6M-2R	6	1/8	4.8	14	14	15.3	17.7	23.9	31.3
SCF-6M-4R	6	1/4	4.8	19	14	15.3	17.7	28.4	35.8
SCF-6M-6R	6	3/8	4.8	22	14	15.3	17.7	29.5	36.9
SCF-6M-8R	6	1/2	4.8	27	14	15.3	17.7	35.1	42.5
SCF-8M-2R	8	1/8	6.4	15	16	16.2	18.6	24.6	32.1
SCF-8M-4R	8	1/4	6.4	19	16	16.2	18.6	29.5	37.0
SCF-8M-6R	8	3/8	6.4	22	16	16.2	18.6	30.2	37.7
SCF-8M-8R	8	1/2	6.4	27	16	16.2	18.6	35.8	43.3
SCF-10M-2R	10	1/8	7.9	18	19	17.2	19.5	25.4	33.0
SCF-10M-4R	10	1/4	7.9	19	19	17.2	19.5	30.2	37.8
SCF-10M-6R	10	3/8	7.9	22	19	17.2	19.5	31.0	38.6
SCF-10M-8R	10	1/2	7.9	27	19	17.2	19.5	36.6	44.2
SCF-12M-2R	12	1/4	9.5	22	22	22.8	22.0	28.4	38.5
SCF-12M-4R	12	1/4	9.5	22	22	22.8	22.0	30.2	40.3
SCF-12M-6R	12	3/8	9.5	22	22	22.8	22.0	31.0	41.1
SCF-12M-8R	12	1/2	9.5	27	22	22.8	22.0	36.6	46.7
SCF-12M-12R	12	3/4	9.5	35	22	22.8	22.0	38.9	49.0
SCF-15M-8R	15	1/2	11.9	27	27	24.4	22.0	36.6	46.7
SCF-16M-8R	16	1/2	12.7	27	25	24.4	22.0	36.8	46.9
SCF-20M-8R	20	1/2	15.9	30	32	26.0	22.0	37.8	47.9
SCF-20M-12R	20	3/4	15.9	35	32	26.0	22.0	39.6	49.7
SCF-22M-12R	22	3/4	18.3	35	32	26.0	22.0	39.6	49.7
SCF-22M-16R	22	1	18.3	41	32	26.0	22.0	47.8	57.9
SCF-25M-12R	25	3/4	21.8	35	38	31.3	26.5	41.1	53.4
SCF-25M-16R	25	1	21.8	41	38	31.3	26.5	50.0	62.3