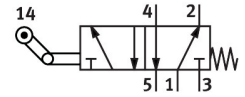
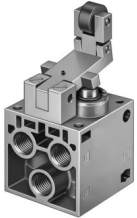


Toggle lever valve with idle return L-5-1/4-B

Part number: 8993

FESTO



 [General operating condition](#)

Data sheet

Feature	Value
Valve function	5/2-way, monostable
Type of actuation	Mechanical
Standard nominal flow rate (standardised to DIN 1343)	550 l/min
pneumatic working port	G1/4
Operating pressure	-0.95 bar ... 10 bar
Design	Poppet seat
Nominal size	7 mm
Type of piloting	Direct
Symbol	00991718
LABS (PWIS) conformity	VDMA24364-B1/B2-L
Ambient temperature	-10 °C ... 60 °C
Actuating force	71.5 N
Product weight	360 g
Type of mounting	With through-hole
Pneumatic connection, port 1	G1/4
Pneumatic connection, port 2	G1/4
Pneumatic connection, port 3	G1/4
Pneumatic connection, port 4	G1/4
Pneumatic connection, port 5	G1/4
Material seals	NBR
Material housing	Die-cast aluminium