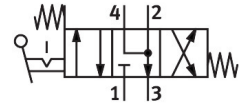


Finger lever valve H-4/3-M5

Part number: 7334

FESTO



[PDF](#) General operating condition

Data sheet

Feature	Value
Valve function	4/3 exhausted
Type of actuation	Manual
Standard nominal flow rate (standardised to DIN 1343)	125 l/min
pneumatic working port	M5
Operating pressure	0 bar ... 8 bar
Type of reset	Mechanical spring
Nominal size	4 mm
Sealing principle	Soft
Type of piloting	Pilot actuated
Flow direction	Non-reversible
Symbol	00991329
LABS (PWIS) conformity	VDMA24364-B1/B2-L
Pneumatic connection, port 1	M5
Pneumatic connection, port 2	M5
Pneumatic connection, port 3	Not ducted