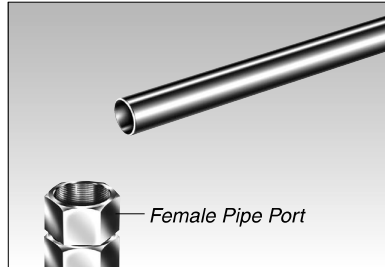
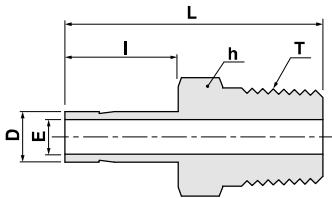
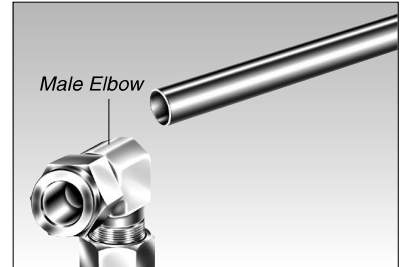


**Male Adapter**  
**SAM**

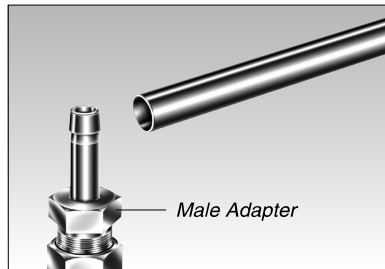
*S-LOK Adapter eliminates alignment problem*



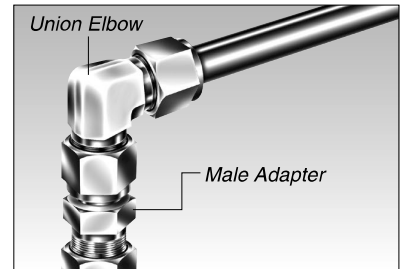
In the direction shown the female port is required to connect with tubing.



The male elbow is positioning in the wrong direction.



To eliminate the problem, use a male adapter into the female port.



Connect a union elbow to the adapter by tightening the S-LOK port with a wrench while holding the elbow wrench pad in the desired direction

*Connects metric tube to female ISO taper thread*

Part No.	Tube O.D	T	E	Width across flat		I	L
	D	R(PT)	Min.	h			
SAM-3M-2R	3	1/8	1.9	12	13.15	29.4	
SAM-6M-2R	6	1/8	4.1	12	15.75	32.8	
SAM-6M-4R	6	1/4	4.1	14	15.75	38.1	
SAM-8M-4R	8	1/4	5.6	14	16.50	39.1	
SAM-10M-4R	10	1/4	7.1	14	17.50	39.9	
SAM-10M-6R	10	3/8	7.1	17	17.50	40.6	
SAM-10M-8R	10	1/2	7.1	22	17.50	46.2	
SAM-12M-4R	12	1/4	8.8	14	23.50	46.5	
SAM-12M-6R	12	3/8	8.8	17	23.50	46.5	
SAM-12M-8R	12	1/2	8.8	22	23.50	51.8	
SAM-18M-8R	18	1/2	13.9	22	24.90	53.2	
SAM-18M-12R	18	3/4	13.9	27	24.90	53.2	
SAM-28M-16R	28	1	22.5	35	31.70	74.7	
SAM-28M-20R	28	1-1/4	22.5	46	31.70	76.2	
SAM-32M-20R	32	1-1/4	26.5	46	40.00	81.0	
SAM-32M-24R	32	1-1/2	31.6	55	51.50	92.2	