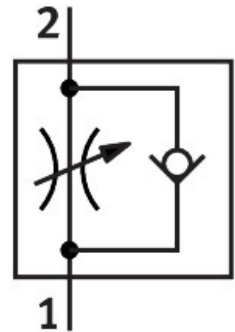


One-way flow control valve GRLA-3/8-QS-6-D

Part number: 193149

FESTO



 [General operating condition](#)

Data sheet

Feature	Value
Valve function	Exhaust air one-way flow control function
Pneumatic connection, port 1	QS-6
Pneumatic connection, port 2	G3/8
Adjustment component	Slotted head screw
Type of mounting	Screw-in
Standard nominal flow rate in flow control direction	495 l/min
Standard nominal flow rate in blocked direction	320 l/min ... 495 l/min
Ambient temperature	-10 °C ... 60 °C
Maritime classification	See certificate
Mounting position	optional
Symbol	00991452
Operating pressure complete temperature range	0.2 bar ... 10 bar
Standard flow rate in flow control direction 0.6->0 MPa (6->0 bar, 87->0 psi)	740 l/min
Standard flow rate in non-return direction 0.6->0 MPa (6->0 bar, 87->0 psi)	840 l/min ... 890 l/min
Operating medium	Compressed air to ISO 8573-1:2010 [7:4:4]
Note on operating and pilot medium	Lubricated operation possible (in which case lubricated operation will always be required)
LABS (PWIS) conformity	VDMA24364-B1/B2-L
Cleanroom class	Class 4 according to ISO 14644-1
Media temperature	-10 °C ... 60 °C
Nominal torque	10 Nm
Tolerance for nominal tightening torque	± 10%
Product weight	60 g
Material screwed plug	Wrought aluminium alloy
Note on materials	RoHS-compliant
Material seals	NBR
Material release ring	POM
Material adjusting screw	Brass

Feature	Value
Material swivel fitting	Die-cast zinc Chromated