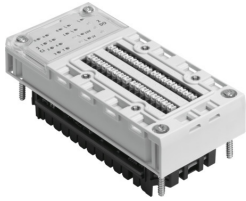


# Input/output module CPX-2ZE2DA

Part number: 576046

FESTO



 General operating condition

## Data sheet

Feature	Value
Dimensions (W x L x H)	(incl. interlinking block and connection technology) 50 x 107 x 50 mm
Grid dimension	50 mm
Product weight	130 g
Ambient temperature	-5 °C ... 50 °C
Storage temperature	-20 °C ... 70 °C
Degree of protection	IP65 IP67
Corrosion resistance class CRC	1 - Low corrosion stress (when installed)
Max. cable length	30 m
LABS (PWIS) conformity	VDMA24364-B2-L
Approval	UL - Recognized (OL)
Note on materials	RoHS-compliant
Material housing	Polymer
LED display	1 Group diagnostics 10 Channel status 2 Module diagnostics 2 channel diagnostics
Diagnosis	Operating-mode-dependent diagnostics
Number of outputs	2
Parameterisation	Switch-on/off delay Frequency output Speed measurement Pulse output Pulse train Rotational speed measurement Frequency measurement Cycle duration measurement Motor operating mode Determination of position Pulse-width modulation One-off counting Continuous counting Periodic counting
Operational voltage range DC	18 V ... 30 V
Nominal operating voltage DC	24 V
Intern power consumption nominal operating voltage	Typically 35 mA
Number of inputs	2
Characteristic for inputs	To IEC 1131-2, type 02

Feature	Value
Switching level	Signal 0: Signal 1:
Switching logic for inputs	PNP (positive switching)
Input debounce time	0.1 $\mu$ s (0.2 $\mu$ s, 0.4 $\mu$ s, 0.8 $\mu$ s, 1 $\mu$ s, 2 $\mu$ s, 4 $\mu$ s, 8 $\mu$ s, 10 $\mu$ s, 50 $\mu$ s, 100 $\mu$ s, 500 $\mu$ s, 1 ms, 3 ms, 10 ms, 20 ms parameterisable)
Max. residual current of inputs per module	2 A
Characteristic for outputs	IEC1131-T2
Switching logic for outputs	NPN (negative switching) PNP (positive switching) Push-pull driver
Max. residual current outputs per module	10 A
Max. power supply per channel	5 A adjustable (20 W lamp load)
Isolation channel - channel	no
Isolation channel - internal bus	Outputs - yes, when using an intermediate air supply
Fuse protection (short circuit)	Internal electronic fuse per channel