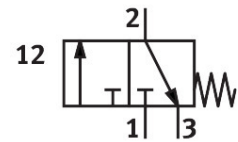


Front panel valve SV-3-M5

Part number: 6817

FESTO



General operating condition

Data sheet

| Feature | Value |
|---|--|
| Valve function | 3/2-way, closed, monostable |
| Type of actuation | Manual |
| Standard nominal flow rate (standardised to DIN 1343) | 65 l/min |
| Operating pressure | -0.095 MPa ... 0.8 MPa |
| Operating pressure | -0.95 bar ... 8 bar |
| Design | Poppet valve with spring return |
| Type of reset | Mechanical spring |
| Nominal size | 2 mm |
| Sealing principle | Soft |
| Mounting position | optional |
| Type of piloting | Direct |
| Flow direction | Non-reversible |
| Symbol | 00991292 |
| lap | Overlap |
| Explosion protection | Zone 1 (ATEX) Zone 2 (ATEX) Zone 21 (ATEX) Zone 22 (ATEX) |
| Operating medium | Compressed air to ISO 8573-1:2010 [7:4:4] |
| LABS (PWIS) conformity | VDMA24364-B1/B2-L |
| Ambient temperature | -10 °C ... 60 °C |
| Actuating force | 12 N |
| Product weight | 40 g |
| Type of mounting | Front panel mounting With through-hole |
| Pneumatic connection, port 1 | M5 |
| Material seals | NBR |
| Material housing | Polymer Brass |