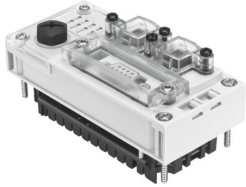


Control block CPX-CEC

Part number: 567346

FESTO



 General operating condition

Data sheet

Feature	Value
Protocol	CODESYS Level 2 EasyIP Modbus® TCP TCP/IP
Dimensions (W x L x H)	50 x 107 x 55 mm
Product weight	155 g
Ambient temperature	-5 °C ... 50 °C
Storage temperature	-20 °C ... 70 °C
Relative air humidity	95 % Non-condensing
Degree of protection	IP65 IP67
Corrosion resistance class CRC	2 - Moderate corrosion stress
LABS (PWIS) conformity	VDMA24364-B2-L
Note on materials	RoHS-compliant
Material housing	PA-reinforced PC
LED display, product-specific	ERR: PLC runtime error M: Modify/forcing active PL: Load supply PS: Electronics supply, sensor supply RUN: PLC status SF: System fault STOP: PLC status
LED display, bus-specific	TP: Link/traffic
Device-specific diagnostics	Channel-oriented and module-oriented diagnostics Undervoltage/short circuit of modules Diagnostic memory
Operator controls	Rotary switch for RUN/STOP
IP address setting	DHCP Via CODESYS Via MMI
Ethernet interface	RJ45 (socket, 8-pin)
Ethernet, number	1
Ethernet, supported protocols	TCP/IP, EasyIP, Modbus TCP
Ethernet, plug connector	RJ45 Bushing 8-pin
Ethernet, data transmission rate	10/100 Mbit/s
Parameterisation	CoDeSys V2.3
Baud rate	10/100 bit/s to IEEE 802.3 (10BaseT) or 802.3u (100BaseTx)

Feature	Value
Configuration support	CODESYS V2.3
Additional functions	Diagnostic functions RS232 communication function
CPU data	32 MB flash 32 MB RAM 400 MHz processor
Nominal operating voltage DC	24 V
Nominal DC operating voltage, load voltage	Without pneumatic components: 18 ... 30 V 24 V With pneumatics type midi/maxi: 21.6 ... 26.4 V With pneumatics type CPA: 20.4 ... 26.4 V With pneumatics type MPA: 18 ... 30 V
Intern power consumption nominal operating voltage	Typ. 85 mA
Power failure bridging	10 ms
Data interface	RS 232 interface Sub-D, 9-pin, bushing 9.6 ... 230.4 kbit/s Galvanically isolated
Programming, operating language	DE, EN
Programming language	To IEC 61131-3 KOP AWL ST FUP AS Additionally CFC
Programming, support for file handling	yes
Programming software	CODESYS provided by Festo V2.3
Program memory	4 MB user program
Processing time	Approx. 200 µs/1 k instruction
Function modules	Read CPX module diagnostics CPX diagnostic status Copy CPX diagnostic trace And others
Flag	30 kB remanent data 8 MB global data memory CODESYS variable concept